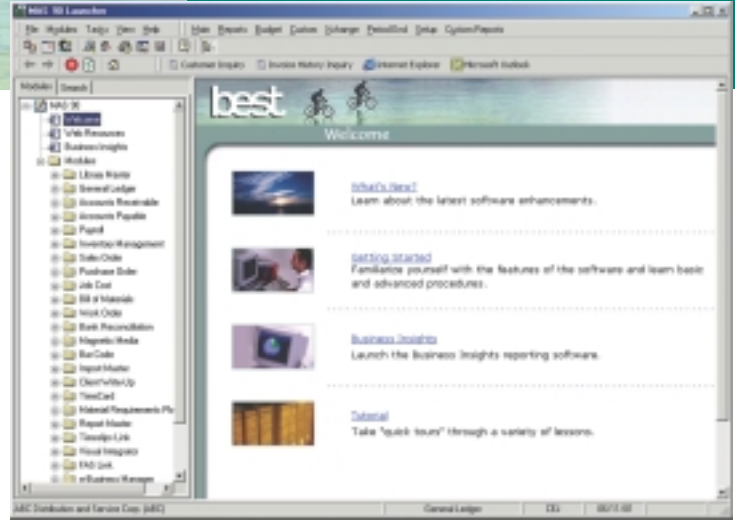




# MAS 90

We leveraged 15 years of business software development experience to create MAS 90 — a graphical accounting and business management software that can give you increased productivity and improved business processes. MAS 90 is easy to learn and use, offers broad accounting functionality and integrates readily with other Windows applications such as Microsoft Word and Excel. Windows users will recognize the MAS 90 Launcher's Explorer-like interface, which allows them to locate any accounting task quickly and easily. Additionally, MAS 90 offers world-class financial and management reporting tools, superb customization capabilities and scalability for growing businesses.



## Minimum Recommended System Configuration for MAS 90

### SYSTEM

Single-User/Client Workstation	Processor	Memory	Add MB per user
Windows 95/98	Pentium 233 MHz <sup>1</sup>	32 MB (64 MB or more recommended)	
Windows Me	Pentium II 300 MHz or higher (400 MHz recommended)	64 MB (128 MB or more recommended)	
Windows NT Workstation 4.0 <sup>3</sup>	Pentium 233 MHz <sup>1</sup>	64 MB (128 MB or more recommended)	
Windows 2000 Professional <sup>2</sup>	Pentium II 300 MHz <sup>1</sup> or higher	64 MB (128 MB or more recommended)	

### SERVER

Windows NT Server 4.0 <sup>3</sup>	Pentium 200 MHz <sup>1</sup> or higher	64 MB (initial 5 users) (96 MB or more recommended)	4-6 MB per MAS 90 session over initial 5
Windows 2000 Server <sup>2</sup>	Pentium II 300 MHz <sup>1</sup> or higher	128 MB (192 MB or more recommended)	4-6 MB per MAS 90 session over initial 5
NetWare 3.20, 4.11 <sup>4</sup> , 4.20 <sup>4</sup> , 5.0 <sup>5</sup> , 5.1 <sup>6</sup>	Pentium 200 MHz <sup>1</sup> or higher	64 MB (2-5 users)	2-3 MB per MAS 90 session over initial 5
Windows 95/98 Peer-to-Peer	Pentium 233 MHz <sup>1</sup> or higher	64 MB (2-5 users) (128 MB or more recommended)	5 users max.
Windows NT Workstation 4.0 Peer-to-Peer	Pentium 233 MHz <sup>1</sup> or higher	64 MB (2-5 users) (96 MB or more recommended)	5 users max.
Windows 2000 <sup>2</sup> /Me Peer-to-Peer	Pentium II 300 or higher	64 MB 128 MB recommended	5 users max.
Windows 2000 Terminal Services/ Citrix MetaFrame	As required by Terminal Services/Citrix MetaFrame	32 MB per concurrent user, in addition to RAM required by Terminal Services/ Citrix MetaFrame	

<sup>1</sup>Only Intel Pentium class or better processors are supported with MAS 90.

<sup>2</sup>Service Pack 1 or better (Service Pack 2 recommended)

<sup>3</sup>Service Pack 4 or better (Service Pack 6A recommended)

<sup>4</sup>Support Pack 9 or higher

<sup>5</sup>Support Pack 4 or higher

<sup>6</sup>Support Pack 2 recommended

**Note:** A CD-ROM drive is required, together with a tape backup drive. Our memory recommendation is higher for NT, Windows 2000 and Windows Me servers and clients because the operating system requires more memory (prior to MAS 90 considerations) than NetWare and Windows 95/98. These configurations have been thoroughly tested on systems running MAS 90 alone. We cannot guarantee acceptable performance on or support for lesser configurations. You will require a more powerful configuration if you intend to run MAS 90 plus other server applications at the same time, since multitasking could adversely affect your MAS 90 performance. **These recommended hardware requirements are subject to change. Prior to installing MAS 90, please review the most current Supported Platform Matrix. It is also important to view the Hot Pre-Installation Issues. Both can be found in Best Online Support Services (BOSS) at the Best Software Web site (www.bestsoftware.com)**

Best Software, Inc.

800-854-3415

www.bestsoftware.com

© 2001 Best Software, Inc. All rights reserved. Reproduction in whole or in part without permission is prohibited. The capabilities, system requirements and/or compatibility with third-party products described herein are subject to change without notice. Contact Best Software for current information.

5M00513 11/01 01-1438/1101